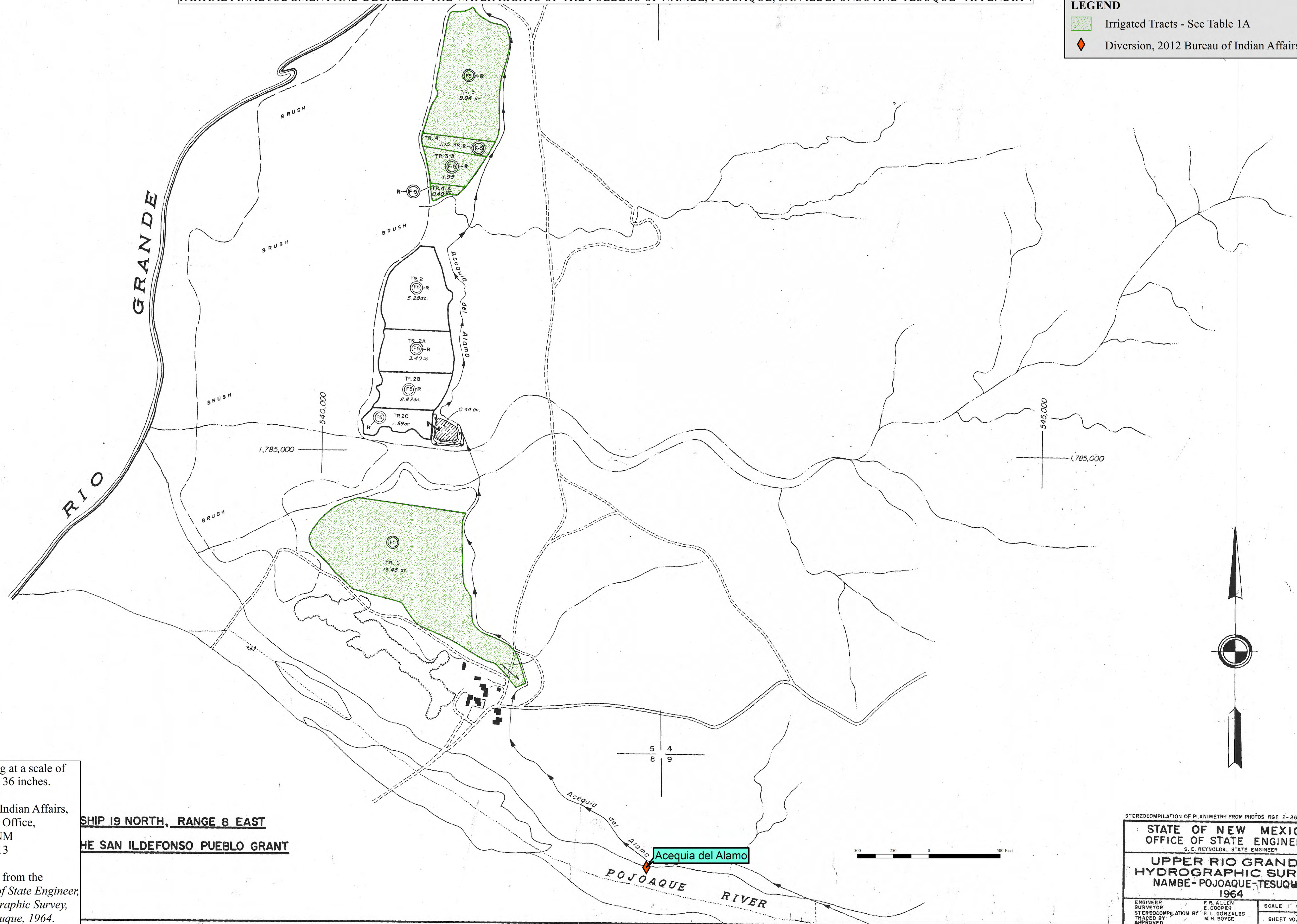


APPENDIX 4 - FIGURE 3 - Pueblo de San Ildefonso Irrigated Lands

PARTIAL FINAL JUDGMENT AND DECREE OF THE WATER RIGHTS OF THE PUEBLOS OF NAMBE, POJOAQUE, SAN ILDEFONSO AND TESUQUE - APPENDIX 4

LEGEND

- Irrigated Tracts - See Table 1A
- Diversion, 2012 Bureau of Indian Affairs Survey



Map assembled for printing at a scale of 1:3600, at a size of 24 x 36 inches.

Prepared by US Bureau of Indian Affairs, Southwest Regional Office, Albuquerque, NM September 2013

Base map reproduced from the State of New Mexico, Office of State Engineer, Upper Rio Grande Hydrographic Survey, Nambé - Pojoaque - Tesuque, 1964.

SHIP 19 NORTH, RANGE 8 EAST
THE SAN ILDEFONSO PUEBLO GRANT

STEREOCOPIATION OF PLANIMETRY FROM PHOTOS RGE 2-262, 2-263

STATE OF NEW MEXICO
OFFICE OF STATE ENGINEER
S. E. REYNOLDS, STATE ENGINEER

UPPER RIO GRANDE
HYDROGRAPHIC SURVEY
NAMBE-POJOAQUE-TESUQUE
1964

ENGINEER SURVEYOR	F. R. ALLEN	SCALE 1" = 300'
STEREOCOPIATION BY	E. L. GONZALES	SHEET NO. 3
TRACED BY	M. H. BOYCE	
APPROVED		